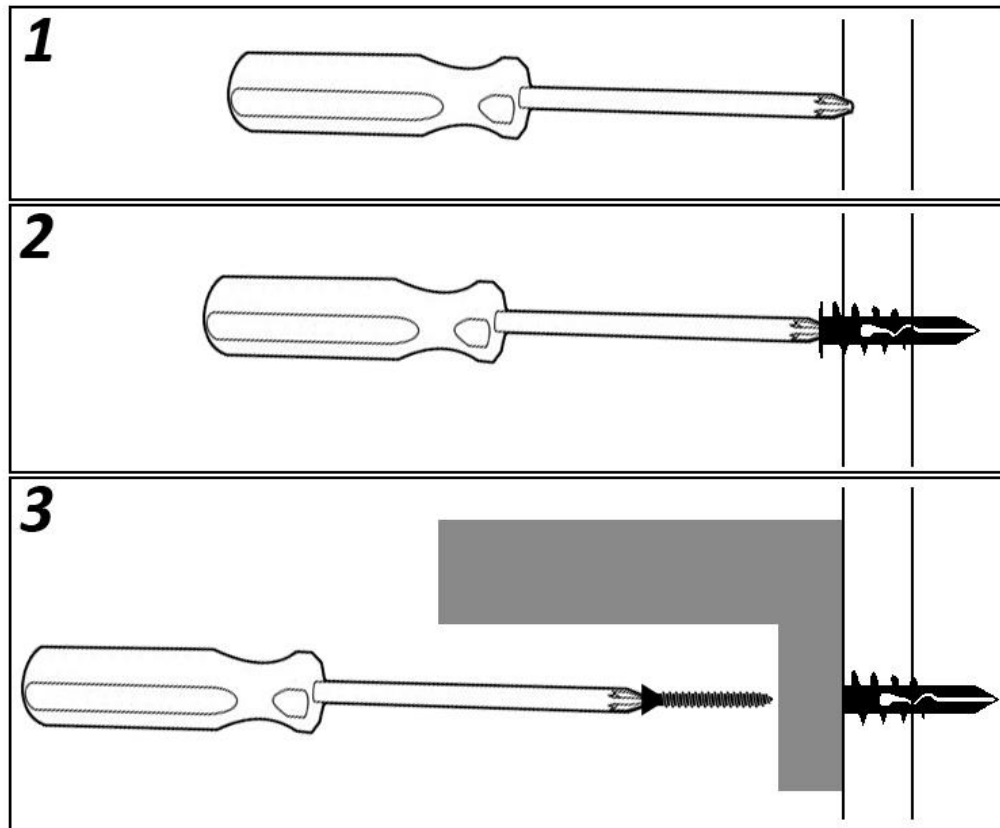


## Drywall Anchor Installation Instructions



1. Locate rack on wall at desired location. Mark all mounting holes by pushing tip of screwdriver into drywall to mark insertion point. Set rack aside.
2. Press tip of anchor into drywall using Philips screwdriver. Drive anchor clockwise into drywall until anchor stops flush with the outer wall surface.
3. Place rack over anchor. Insert screw and tighten.
4. Cover screws with snap caps.

If mounting directly to studs, use screws without wall anchors.